

FABRIC COLLECTION

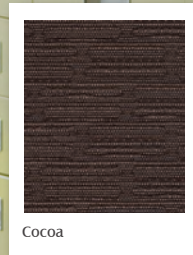
PORTOBELLO

Roller Blind, Panel Glide and Roman Shade Fabric

COLOUR RANGE - AVAILABLE IN TRANSLUCENT & BLOCKOUT



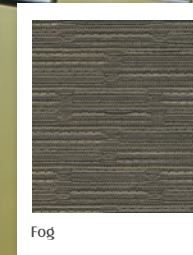
Blanc



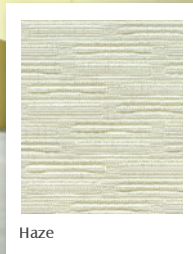
Cocoa



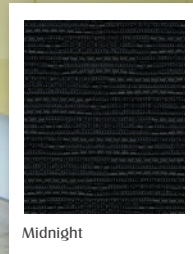
Dove



Fog



Haze



Midnight



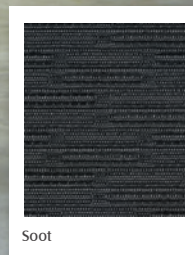
Mink



Pearl



Smoke



Soot

Note: Colours are as accurate as the printing process allows.

LUXAFLEX®

WINDOW FASHIONS



FABRIC COLLECTION

PORTOBELLO

Roller Blind, Panel Glide and Roman Shade Fabric

Features & Benefits

Available Roll Sizes

Translucent 2.8m x 25m
Blockout 2.8m x 20m

Thickness

Translucent 0.40mm ± 0.10mm
Blockout 0.70mm ± 0.10mm

Cutting Technique

Ultrasonic

Applications

Roller Blind, Panel Glide and Roman Shade applications.

Composition & Weight

100% Polyester
Translucent 204gsm ± 30gsm
Blockout 465gsm ± 30gsm

Colourfastness

6-7 Blue Scale

MULTIVISION® Collection

MULTIVISION® Collection is a group of fabrics that are perceived to be the same colour tone, but have different opacities. A number of Portobello fabric colours have been selected for the MULTIVISION® Collection. For more information refer to the LUXAFLEX® MULTIVISION® Collection Brochure.

WOVEN IN AUSTRALIA

Proudly woven in Australia to support the local textile industry.

DURAGUARD® Fabric Protector

DURAGUARD® Fabric Protector effectively repels most stain causing agents with its proven, water based, fluorochemical, formula. This fabric protection is totally invisible and has high levels of stain repellence. It makes cleaning and maintaining the fabric much easier.

Sanitized®

Antimicrobial Protection

Treated with Sanitized® Antimicrobial Protection which effectively reduces the development of bacteria, odour and mildew.

Care and Cleaning

General care:

Dusting with a feather duster is all that is required to keep your fabric looking good.

Stains:

For the removal of dirt and grime, simply wipe fabric skins with a sponge soaked in lukewarm water. If marks are still visible add a little detergent. Then dry gently with a clean cloth.

LUXAFLEX® Portobello Fabric

COMFORT RATING# GUIDE

FABRIC	COLOUR	Heat Protection	Shade Factor	Insulation	Glare Reduction	UV Protection
Portobello Translucent	Pearl	◆◆◆◆	◆	◆◆	◆◆	◆
Portobello Translucent	Midnight	◆◆◆	◆◆◆◆	◆◆	◆◆◆◆	◆◆◆◆
Portobello Translucent	Cocoa	◆◆◆	◆◆◆◆	◆◆	◆◆◆◆	◆◆◆◆
Portobello Blockout	Midnight	◆◆◆	◆◆◆◆	◆◆	Blockout	◆◆◆◆
Portobello Blockout	Cocoa	◆◆◆	◆◆◆◆	◆◆	Blockout	◆◆◆◆

* We recommend installing blinds with the light side facing the window for optimal solar optical performance.

COMFORT RATING# Guide

◆	No protection/performance		Heat Protection		UV Protection
◆◆	Low level of protection/performance		Shade Factor		Glare Reduction
◆◆◆	Medium level of protection/performance		Insulation		
◆◆◆◆	High level of protection/performance				
◆◆◆◆◆	Highest level of protection/performance				

COMFORT RATING has been devised by Hunter Douglas Limited with the assistance of Canesis Pty Ltd - an Independent Australian Fibre and Textile Research and Development Company.

Fire Retardancy Information



*1 Complies with the General Requirements of the Building Code of Australia for Fire Hazard Properties of materials in buildings.

*2 Not suitable for use in parts of buildings with Special Requirements, i.e. fire isolated exits; public corridors leading to a fire isolated stairway, passageway or ramp; a patient care area of health care buildings; and in a public assembly building (e.g theatre or hall) not protected with a sprinkler system.

Fire Retardancy Information		Translucent*1	Blockout*1 & *2
Ignitability Index	Range [0-20]	0	13
Spread of Flame Index	Range [0-10]	0	0
Heat Evolved Index	Range [0-10]	0	2
Smoke Developed Index	Range [0-10]	0-1	7

Availability

Please contact your LUXAFLEX® Area Manager for more information.



AUSTRALIAN MADE

MultiVision® Collection

LUXAFLEX®

WINDOW FASHIONS

