

ROLLER BLINDS, VERTICAL BLINDS, ROMAN SHADES & PANEL GLIDE WESTCOAST FABRIC COLLECTION

WESTCOAST FABRIC COLLECTION



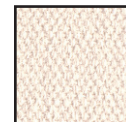
White



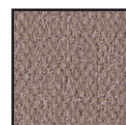
Vanilla



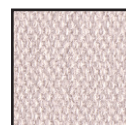
Ice Cream



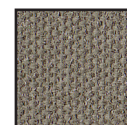
Bisque



Pistachio



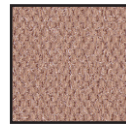
Sesame



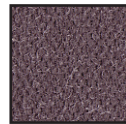
Nude



Mushroom



Latte




Iron

Note: Colours are as close as the printing process allows.

NOW AVAILABLE IN 10 EXCITING NEW COLOURS

We are pleased to present the **ALL NEW WESTCOAST** Fabric Collection range in 10 exciting new colours suitable for Roller Blinds, Vertical Blinds, Roman Shades and Panel Glide applications. WESTCOAST Fabric is a 100% polyester light filtering fabric available in 10 new latest trend colours.

FEATURES

- Light Filtering
- Superior Fabric Coating
- 10 Colours
- UV resistant
- New Textured Basecloth
-  **Sanitized**
THE BUILT IN ANTIMICROBIAL PROTECTION
- **AUSTRALIAN MADE**

BENEFITS

- All colours in the range allow light to filter through the fabric providing a mid level privacy factor.
- A minimum of 2 layers of coating are used to provide you with a more durable fabric.
- New full range of neutrals with the addition of great new season designer colours.
- All colours meet Australian Standards for colour fastness to resist fading.
- Gives the fabric a great new look and feel and a durable easy clean surface.
- Treated with **SANITIZED**® Antimicrobial Protection to resist most moulds and mildew.
- Proudly made in Australia to support the local Textiles Industry.

AVAILABILITY

Roller Blinds, Roman Shades and Panel Glide are now available in WESTCOAST Fabric. Please contact your Area Sales Manager for more information.

LUXAFLEX® WINDOW FASHIONS





Technical Data Sheet

WESTCOAST Fabric

Composition Plain woven 100% Polyester fabric	Weight 420 gsm \pm 20 gsm [finished weight]
Coating Acrylic Coating Coloured Sealer \rightarrow Topcoats [2]	Roll Weight [AS 2001.2.13.1987] Roller = 14.8kg 100mm = 3.7kg 127mm = 4.7kg
Thickness [AS 2001.2.15.1989] 0.65mm \pm 0.10mm	Available Roll Sizes 2.4m x 20m [Nom] 100mm x 100mm [Nom] 127mm x 100mm [Nom]
Colourfastness [AS 2001.4.21] 6-7 Blue Scale	Applications Suitable for Vertical Blinds, Roller Blinds, Roman Shades and Panel Glides.
Stiffness [AS 2001.2.9.1977] 63mm \pm 10mm	Cutting Technique Recommended Ultrasonic, Aeronaut, Knife cut
Australian Made Protection/SANITIZED [®] Antimicrobial Protection	Fabric Guidelines It is recommended that the fabric be cut in one direction only for Roman Shades, ie. blind width from roll width.

Care & Cleaning

General Care - dusting with a feather duster
is all that is required to keep your fabric looking good.

Stains - for the removal of dirt and grime, simply
wipe fabric skins with a sponge soaked in
lukewarm water. If marks are still visible add a
little detergent. Then dry gently with a clean cloth.

* We recommend conducting independent manufacturing trials, as equipment may vary between manufacturers.

Fire Retardant (AS 1530.3.1999)

Complies with the General Requirements of the Building Code of Australia for Fire Hazard Properties of materials in buildings. Not suitable for use in parts of buildings with Special requirements, i.e. fire isolated exits; public corridors leading to a fire isolated stairway, passageway or ramp; a patient care area of health care buildings; and in public assembly building (eg theatre or hall) not protected with a sprinkler system.

Ignitability Index	0	[Range 0-20]
Spread of Flame Index	0	[Range 0-10]
Heat Evolved Index	0	[Range 0-10]
Smoke Developed Index	4	[Range 0-10]