

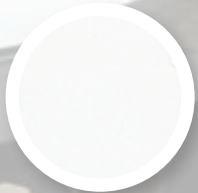
LUXAFLEX® FABRIC COLLECTION

WARATAH

PANEL GLIDE, ROLLER AND VERTICAL BLIND APPLICATIONS



COLOUR RANGE



Bounty



Martini



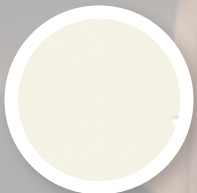
Gazing



Illusion



Mario



Cashmere



Embrace



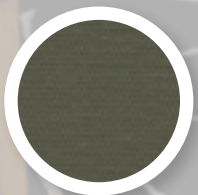
Sahara



Arabica



Element



Zelda



Yen

Note: Colours are as accurate as the printing process allows

SIMPLY SMARTER BY DESIGN



WARATAH

PANEL GLIDE, ROLLER AND VERTICAL BLIND APPLICATIONS

FABRIC

Waratah Fabric is Australian Made and is available in 12 essential Australian fashion forward colours.

The fabric has been designed and tested for Australian conditions and consumer requirements.

FEATURES & BENEFITS

Opacity

12 blackout colours

Made in Australia

Proudly made in Australia to support the local textile industry.

TECHNICAL SPECIFICATIONS

Composition

100% Polyester

Fabric Weight

380gsm ± 20gsm

Fabric Thickness

0.32mm ± 0.10mm

Colour Fastness

6-7 Blue Scale

Roll Size

2.8m x 20m, 89mm x 100m, 127mm x 100m

Cutting Techniques

Aeronaut, Knife Cut, Ultrasonic & Crush Cut

CARE AND CLEANING

General Care:

Dusting with a feather duster is all that is required to keep your fabric looking good.

Stains

For the removal of dirt and grime, simply wipe fabric skins with a sponge soaked in lukewarm water. If marks are still visible add a little detergent. Then dry gently with a clean cloth.

COMFORT RATING™# AND SOLAR OPTICAL GUIDE

COMFORT RATING™# GUIDE	SOLAR OPTICAL PROPERTIES (ASTM E 424 -1971)							
	Heat Properties			Visible Light Properties		UV	Heat Control	
COLOUR	TS	RS	AS	TL	RL	AL	TUV	SC
Yen	◆◆◆◆◆◆◆◆◆◆	◆◆◆◆◆◆◆◆◆◆	◆◆◆◆◆◆◆◆◆◆	◆◆◆◆◆◆◆◆◆◆	◆◆◆◆◆◆◆◆◆◆	◆◆◆◆◆◆◆◆◆◆	◆◆◆◆◆◆◆◆◆◆	◆◆◆◆◆◆◆◆◆◆
	0	5	95	0	5	95	0	0.07

COMFORT RATING™# GUIDE

- ◆ No protection/performance
- ◆◆ Low level of protection/performance
- ◆◆◆ Medium level of protection/performance
- ◆◆◆◆ High level of protection/performance
- ◆◆◆◆◆ Highest level of protection/performance

- Heat Protection
- Glare Reduction
- UV Protection
- Shade Factor

COMFORT RATING™# GUIDE



COMFORT RATING™# has been devised by Hunter Douglas Limited with the assistance of Canesis Pty Ltd - an Independent Australian Fibre and Textile Research and Development Company.

SOLAR OPTICAL PROPERTIES

AS Heat Absorbance (%)	The percentage of solar energy (heat) absorbed by the fabric. The higher the value the more heat is absorbed by the fabric.
RS Heat Reflectance (%)	The percentage of solar energy (heat) reflected by the fabric. The higher the value the more heat is reflected by the fabric.
TS Heat Transmittance (%)	The percentage of heat transferred through the fabric. The lower the value the less heat is transferred through the fabric.
AL Light Absorbance (%)	The percentage of light absorbed by the fabric. The lower the value the more light is absorbed by the fabric.
RL Light Reflectance (%)	The percentage of light reflected by the fabric. The higher the value the more light is reflected away from the fabric.
TL Light Transmittance (%)	The percentage of light transferred through the fabric. The lower the value the less light is transferred through the fabric.
SC Shading Coefficient	The efficiency of a fabric to provide shade. The higher the figure the more efficient at providing shade.
TUV Ultra Violet Transmittance	The value of ultra violet light going through the fabric. The lower the value the less ultra violet light goes through the fabric.

FIRE RETARDANCY INFORMATION



Waratah Fabric has a Fire Retardancy rating suitable for residential applications. It has been tested to AS1530.3* and AS1530.2^.

Ignitability Index*	12	[Range 0-10]
Spread of Flame Index*	9	[Range 0-10]
Heat Evolved Index*	3	[Range 0-10]
Smoke Developed Index*	6	[Range 0-10]
Flammability Index^	65	[Range 0-100]

* AWTA test report number AS 1530.3 ^ AWTA test report number AS 1530.2