

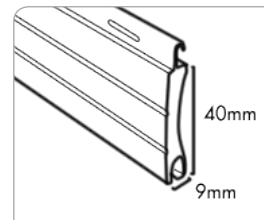
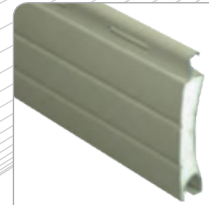


## CURVED SERIES

AR400, AR401, AR402



### SLAT PROFILES



### FEATURES & BENEFITS

- Insulation
- Added security
- Wide range of colours
- Minimum roll up size
- Style choices
- Reduced greenhouse emissions
- Protection from the elements
- Light control
- Sound dampening

### TECHNICAL SPECIFICATIONS

Weight (per m <sup>2</sup> )	4kg
Maximum Curtain Width	3.6m
Maximum Area (m <sup>2</sup> )	7.7
Gauge of Aluminium	0.32mm
Profile Slat Height	40mm
Profile Slat Thickness	9mm
Standard Guide Dimensions	53mm
Standard Bottom Bar Dimensions	50mm
Standard Axle	50mm circular

The Rollashield Residential Curved Series profiles have been designed specifically to suit the domestic roller shutter market in Australia but are also ideal with many commercial applications. The slat is roll formed in our Adelaide manufacturing facility to the highest of world standards using German built roll forming machines which are the most advanced of their type in the world.

The Rollashield Residential Curved Series slat is a double walled cavity with PU foam injected during the roll forming process. This process provides economical strength and insulation qualities while maintaining exceptional working performance of the slat. The curved shape of the slat provides optimal lateral strength and minimal roll sizes, offering a much smaller head box size.

The Rollashield curved series is available in three different styles, the 400 with profile lines on the convex side and a smooth finish on the concave, the 401 with a smooth finish on both sides and the 402 with profile lines on both sides.

**BOX COLOUR OPTIONS**



**ROLLER SHUTTER COLOUR OPTIONS**



*Please note: Colours displayed are a guide only and have been matched as closely as possible. Due to the nature of the printing process, some degree of colour variation may occur. We recommend that you use production line prepared samples for final colour selection or approval.*

**CONTROL OPTIONS**

**MANUAL**



**MOTORIZED**



**BOXING OPTIONS**

**SQUARE BOXING (SQ45)**

Sizes Available	Maximum Overall Height
150mm	1300mm
165mm	1700mm
180mm	2135mm
205mm	3000mm
230mm	3800mm
250mm	4400mm

*Please note: Only when using Ozroll's 50mm circular axle.*

**ROUND BOXING (RD360)**

Sizes Available	Maximum Overall Height
140mm	1140mm
160mm	1650mm
180mm	2000mm
200mm	2800mm

*Please note: Only when using Ozroll's 50mm circular axle.*



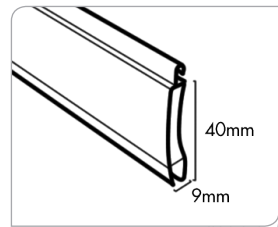
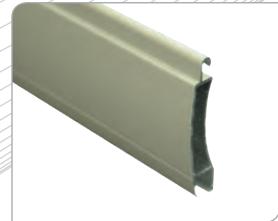


## SENTRY FIRESHIELD

### BAL 40 AE401



#### SLAT PROFILES



#### FEATURES & BENEFITS

- Bushfire Attack Level (BAL) 40
- Increased strength and security
- Available with heavy duty axle & bearing
- Minimal flex
- Optional powder coating
- Ideal for commercial applications
- Available with restrained inserts & guides
- Light control

#### TECHNICAL SPECIFICATIONS

Weight (per m <sup>2</sup> )	8kg
Maximum Curtain Width (with standard guide)	4m
Maximum Curtain Width (with extended guide)	4.6m
Maximum Area (m <sup>2</sup> )	12
Gauge of Aluminium	1mm
Profile Slat Height	40mm
Profile Slat Thickness	9mm
Standard Guide Dimensions	53mm
Standard Bottom Bar Dimensions	50mm
Standard Axle	50mm circular

Rollashield Sentry Fireshield is ideal for residential or commercial use, particularly in areas prone to fire hazards. Manufactured to the highest standards with state of the art equipment, the Sentry Fireshield profile is available in a 40mm curved profile.

The Sentry Fireshield has superior strength offering increased security and performance. The overall profile appearance is clean and stylish with only a slight "V" groove line on the convex side. Available in several long lasting and fade resistant Interpon coatings or a natural anodized finish, the Sentry Fireshield Profile can also be powder coated in a colour of your choice.

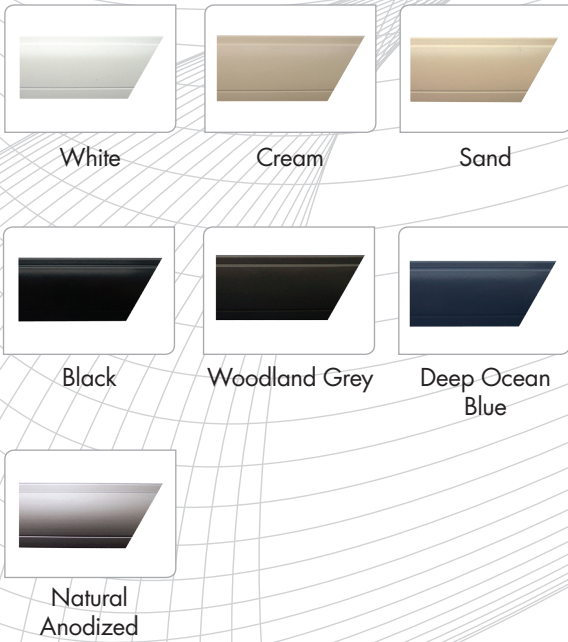
It is common knowledge that hot or burning embers entering the home during a bushfire is a major factor in the ignition of the building itself. Rollashield Sentry Fireshield Roller Shutters have been credited with saving homes from burning to the ground when other surrounding properties were not so fortunate.

The Sentry Fireshield shutter has been extensively tested by the CSIRO under severe bushfire simulated conditions and proved to be able to withstand a maximum radiant heat exposure of 40kw/m<sup>2</sup> after 60 minutes. As no ignition or flaming was observed throughout the testing the Sentry Shutter has received a Bushfire Attack Level (BAL) of 40.

**BOX COLOUR OPTIONS**



**ROLLER SHUTTER COLOUR OPTIONS**



*Please note: Colours displayed are a guide only and have been matched as closely as possible. Due to the nature of the printing process, some degree of colour variation may occur. We recommend that you use production line prepared samples for final colour selection or approval.*

**CONTROL OPTIONS**

**MANUAL**



**MOTORISED**



**BOXING OPTIONS**

**SQUARE BOXING (SQ45)**

Sizes Available	Maximum Overall Height
150mm	1100mm
165mm	1600mm
180mm	2000mm
205mm	2800mm
230mm	3400mm
250mm	3800mm

*Please note: Only when using Ozroll's 50mm circular axle.*

**ROUND BOXING (RD360)**

Sizes Available	Maximum Overall Height
140mm	900mm
160mm	1600mm
180mm	2000mm
200mm	2600mm

*Please note: Only when using Ozroll's 50mm circular axle.*

**TESTING RESULTS**

Performance Criteria	Time To Failure (min)	Position Of Failure
Formation of through gaps greater than 3mm	No Failure	-
Sustained flaming for 10 seconds on the non-fire side	No Failure	-
Flaming on the fire-exposed side at the end of the 60 minutes test period	No Failure	-
Radiant heat flux 365mm from the non-fire side exceeding 15kW/m <sup>2</sup>	No Failure	-
Mean and maximum temperature rises greater than 140K and 180K	n/a	-
Radiant heat flux 250mm from the specimen, greater than 3kW/m <sup>2</sup> between 20 minutes and 60 minutes	No Failure	-
Mean and maximum temperature of internal faces exceeding 250°C and 300°C respectively between 20 minutes and 60 minutes after commencement of test	n/a	-
<b>Crib Class B</b>	<b>Peak Heat Flux</b>	<b>40 kW/m<sup>2</sup></b>

NOTE: Performance observed in respect of Clause 14.4 of AS1530.8.1-2007 criteria. Report number: FSZ 1444 / Job Number: SZ3303 / Date of Issue: 5th November 2010. For the purpose of building regulations in Australia, the test specimen achieved a Bushfire Attack Level (BAL) of B40. This report details methods of construction, the test conditions and the results obtained when the specific element of construction described herein was tested in accordance with AS 1530.8.1-2007.

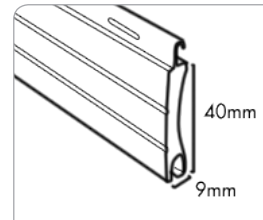
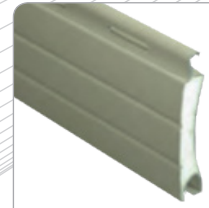


## STORMSHIELD

HDF Cyclone Rated



### SLAT PROFILES



### FEATURES & BENEFITS

- Cat 3 cyclone rating
- Premium insulation
- Increased strength and security
- Light control
- Minimal flex
- Available in restrained and unrestrained
- Idea for closing in outdoor areas

### TECHNICAL SPECIFICATIONS

Weight (per m <sup>2</sup> )	6kg
Maximum Curtain Width (with standard guide)	3.6m
Maximum Curtain Width (with extended guide)	4m
Maximum Curtain Width (with restrained guide)	4.2m
Maximum Area (m <sup>2</sup> )	10
Gauge of Aluminium	0.32mm
Profile Slat Height	40mm
Profile Slat Thickness	9mm
Standard Guide Dimensions	53mm
Restrained Guide Dimensions	70mm
Standard Bottom Bar Dimensions	50mm
Standard Axle	50mm circular

Since its inception our Residential Slat has consistently proved to be a high quality, robust and well accepted profile so therein provided the perfect solid platform on which to develop the "Stormshield" profile. The development and introduction of the High Density Foam (HDF) offers remarkable advantages where there is high wind or high risk. The HDF is injected into the slat profile under controlled conditions during the manufacturing roll-forming process.

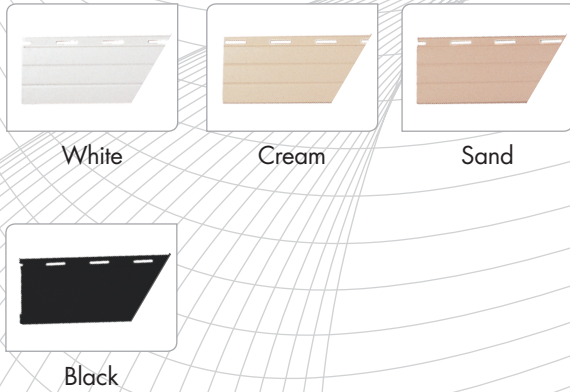
Stormshield is available in both restrained and non restrained options. Our HDF filled profile combined with restrained guides has been tested successfully to meet with cyclone category 3 regulations, while the HDF unrestrained provides an option with standard materials where extra strength and security is required.



**BOX COLOUR OPTIONS**



**ROLLER SHUTTER COLOUR OPTIONS**



*Please note: Colours displayed are a guide only and have been matched as closely as possible. Due to the nature of the printing process, some degree of colour variation may occur. We recommend that you use production line prepared samples for final colour selection or approval.*

**RESTRAINED GUIDE**



**BOXING OPTIONS**

**SQUARE BOXING (SQ45)**

Sizes Available	Maximum Overall Height
150mm	1300mm
165mm	1700mm
180mm	2135mm
205mm	3000mm
230mm	3400mm
250mm	4400mm

*Please note: Only when using Ozroll's 50mm circular axle.*

**CONTROL OPTIONS**

**MANUAL**



**MOTORISED**



**ROUND BOXING (RD360)**

Sizes Available	Maximum Overall Height
140mm	1140mm
160mm	1650mm
180mm	2000mm
200mm	2800mm

*Please note: Only when using Ozroll's 50mm circular axle.*

**TESTING RESULTS**

- Australian Standard AS / NZS 1170.2 - 2002 Structural Design Action Part 2: Wind Actions was used to determine the cyclonic wind loading for roller shutters fitted to a suburban house with an average roof height of 5m located in a sheltered Terrain Category 3 Region C cyclonic location. The design wind speed is calculated to be 47 metres per second (169.2 kl/h).
- The Australian Standard AS 4040. 3 – 1992 Methods of Testing Sheet Roof and Wall Cladding, Method 3: Resistance to Wind Pressures for Cyclone Regions was used to an ultimate load pressure of 2.50 kPa, which is needed to fulfil the requirements.

The HDF Super Shutter passed cyclic fatigue loads of 10,200 cycles at incremental increases to the final load, supporting the final single cycle pressure of 2.5kPa for 1 minute. The shutter deflection only increase to a nominal distance of 82mm from the standard rest position during the tests.